



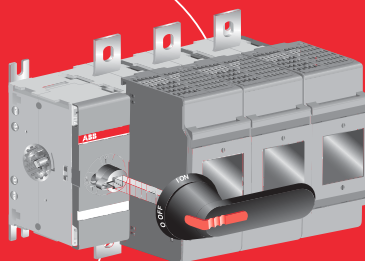
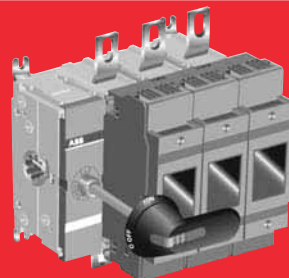
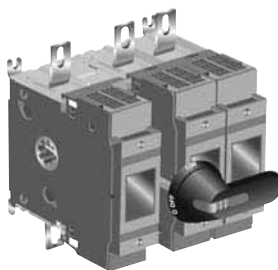
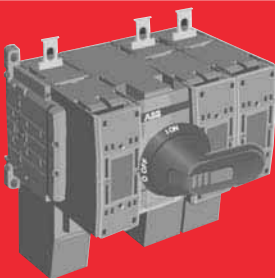
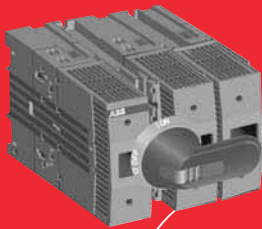
Complete range of fusible disconnect switches

From 30 to 1200A, 600 V

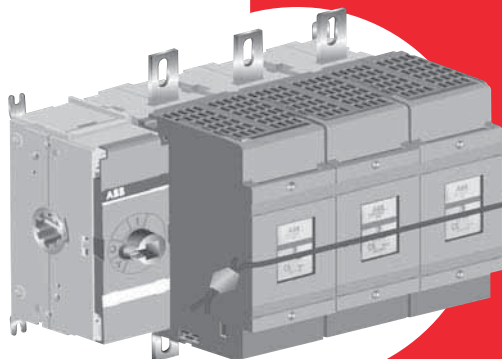
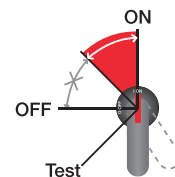
Features within the range of ABB fusible disconnect switches include single pole to four pole versions.

- The fusible disconnect switches mechanism located in any position together with the direction of the terminals, increasing the ease of installation and adaptability to different types of cubicle designs.
- A wide selection of accessories improve the usability of the switch fuses; 6 and 8- pole, changeover, by-pass and mechanically interlocked switch combinations can be built up by means of conversion kits.

The fusible disconnect switches are available for all types of fuse links, DIN, BS, NFC, UL, CSA.



Designed for safety

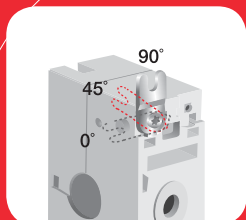


The OS fusible disconnect switch ensures safe operation, protecting both people and equipment.

Designed and based on substantial experience of electrical safety, the fusible disconnect switch eliminates the risk of electrical accidents:

- The fuse covers cannot be opened while the fusible disconnect switch is in the ON-position and can be sealed in the closed position.
- The double insulated external operating handle eliminates the risk of touching live parts outside the box.
- The handle indicates the position of the contacts with complete reliability in all situations.

Easy, flexible installation



The OS 200...1200 fusible disconnect switch is easy to use and a snap to install according to your choice: the adjustable mounting feet allow both top and side mounting of the fusible disconnect switch.

The OS fusible disconnect switch offers you flexible cabling options. The high terminal positioning with space to the back plate simplifies the mounting of cables. It's also ideal for double cabling, which in turn saves on space.